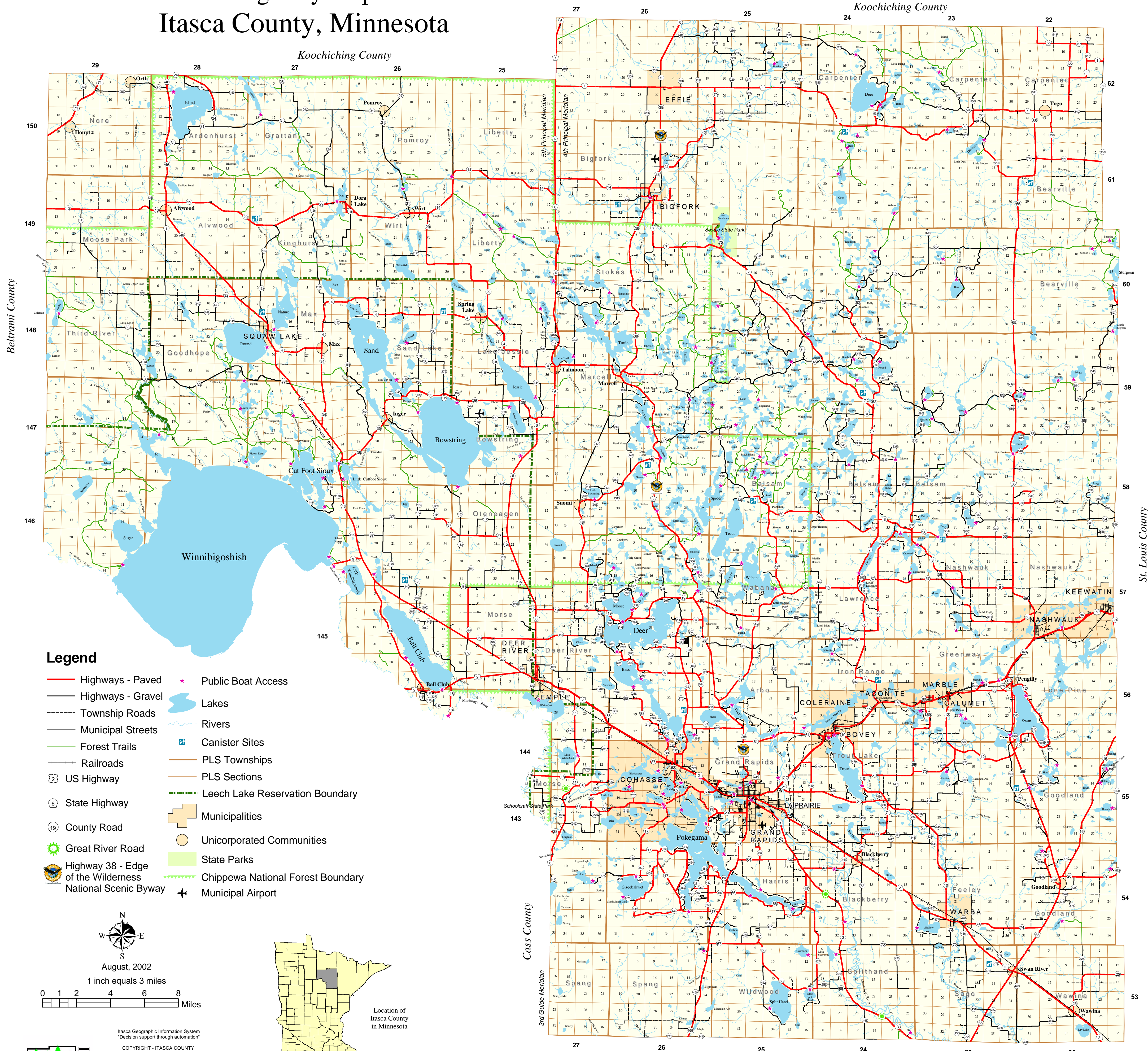


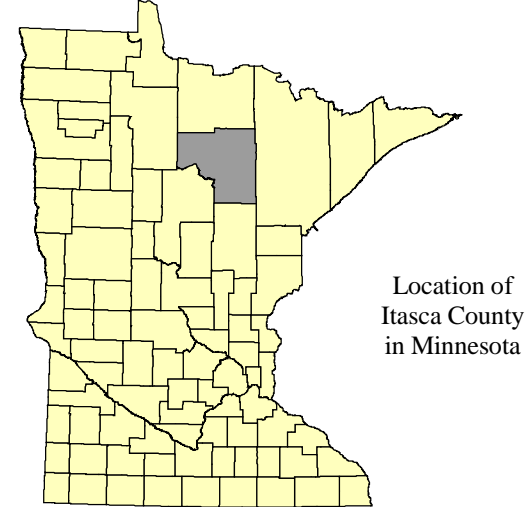
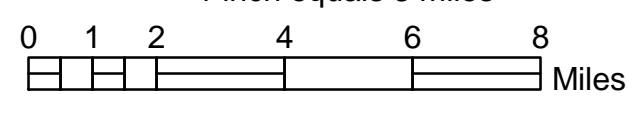
Highway Map Itasca County, Minnesota



- Legend**
- Highways - Paved
 - Highways - Gravel
 - Township Roads
 - Municipal Streets
 - Forest Trails
 - Railroads
 - US Highway
 - State Highway
 - County Road
 - Great River Road
 - Highway 38 - Edge of the Wilderness National Scenic Byway
 - Public Boat Access
 - Lakes
 - Rivers
 - Canister Sites
 - PLS Townships
 - PLS Sections
 - Leech Lake Reservation Boundary
 - Municipalities
 - Unincorporated Communities
 - State Parks
 - Chippewa National Forest Boundary
 - Municipal Airport



August, 2002
1 inch equals 3 miles

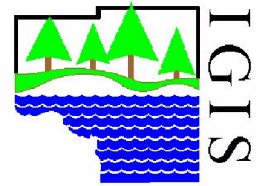


Location of Itasca County in Minnesota

Itasca Geographic Information System
"Decision support through automation"

COPYRIGHT - ITASCA COUNTY
ALL RIGHTS RESERVED
No reproduction of this map is allowed by any method or in any form without written permission.

This information is a compilation of data from different sources with varying degrees of accuracy and requires a qualified field survey to verify.



THE 47TH DEGREE OF LATITUDE IS TWO MILES SOUTH OF THE COUNTY LINE

State Plane Projection
FIPS Zone: 2201
Spheroid: GRS 1980
North American Datum 1983